



 **Cosmetic**  
Dental Laboratory  
**800-696-7165**

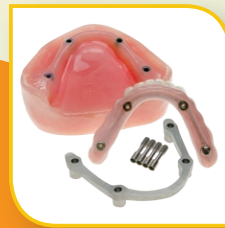
**Product Catalog**



*Dentures*



*Partials*



*Implants*



*Mouthguards*

**“We are the  
Removable Specialist”**

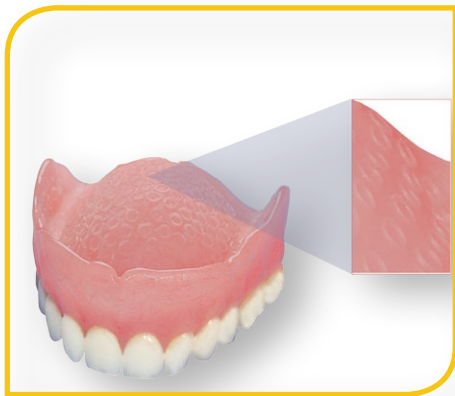
[www.OCDENTALLAB.com](http://www.OCDENTALLAB.com)

# Dentures



## *Premium Denture*

At OC Cosmetic Dental Lab, we are known for comfortable and natural-looking dentures. Our formula for beauty is combining high quality materials, aesthetic teeth setups, and experienced craftsmanship. Our technicians always take into account the shape, shade, arrangement of teeth, and the occlusal surface when fabricating a Premium Denture. Premium Dentures can always be upgraded with porcelain or custom multi-layered composite teeth, which contain a high degree of hardness, density, resistance and shade stability. A premium multi-layered composite tooth is highly aesthetic and dramatically improves the look and wear of a denture.



## *Suction-Cup Denture*

The Suction-Cup Denture provides an alternative for a more retentive denture. This denture is acrylic-based with a unique soft silicone liner which utilizes a series of small suction cups which gently grip the oral tissue for additional retention and stability. It is an excellent alternative for the unpopular adhesive material. The Suction-Cup Denture can be used on the maxillary and mandibular arch. Plus, ANY existing acrylic denture can be easily converted to a Suction-Cup with a reline.



## *Totally Natural Denture*

The Totally Natural System is an injection process which utilizes a special resin that can be finished much thinner than conventional acrylics, creating a slender lightweight denture without compromising strength. Also, a Totally Natural Denture's translucency captures the patient's natural gum tissue, creating a beautiful natural look. Durability, comfort & beauty, all in one.

## Valplast® or TCS Flexible

Valplast® Flexible Partials are strong durable thermoplastics that snap securely and comfortably into place around existing natural teeth. The Valplast is a translucent resin that captures the natural tissue, making them virtually unnoticeable in the mouth. Made from a biocompatible thermoplastic nylon material, Valplast provides optimum strength, and proven durability with a guarantee against breakage. Valplast is the most popular aesthetic partial in the market.

## Valplast® or TCS Flexible with Vitallium® Rest Seats

Valplast with Vitallium Metal Rest Seats has the flexibility of a non-metal thermoplastic partial with the stability of cast metal rest seats. In a removable partial denture, forces are applied and must be transferred to the supporting teeth and tissues in an a traumatic fashion. In many cases, non-metal thermoplastics, though aesthetically pleasing, would function better if they had metal rest seats to transfer forces down the long axes of the abutment teeth. The Vitallium Rest Seats help support and stabilize the flexible partial. Valplast with Vitallium Rest Seats is exceptionally attractive due to its natural-looking clasps and minimal metal. Take advantage of this creative and functional thermoplastic design.

## Valplast® or TCS Flexible with Vitallium® Frame

A Valplast with Vitallium Frame combines function, comfort, and aesthetics. This hybrid appliance utilizes thermoplastic clasps, which blend right into the gum tissue creating a natural looking smile and a Vitallium framework which provides extra strength and stability to the partial. This combination design is superior because the metal framework provides support while relieving excessive pressure and torque on the abutment teeth, creating maximum comfort with superb aesthetics. A Valplast with a Vitallium Frame is highly recommended on a mandibular arch with missing posterior teeth.

Without Valplast®



With Valplast®



Valplast®



Valplast® with Rest Seats



Valplast® with Vitallium Frame



Before



After





# Partials



## *Vitallium*

Vitallium™ 2000 chrome cobalt has remained the undisputed premium partial denture alloy for over sixty years. Vitallium 2000 is nickel and beryllium-free and polishes to a brilliant mirrored finish that will be readily accepted by your patients. Our team surveys and designs each partial using your clinical information and personal preferences. Strict attention to detail coupled with quality materials, techniques, and casting equipment results in precise clasp adaptation and retention for each framework.

## *Elasti-Grip*

The Elasti-Grip Partial Denture is a unique acrylic-based denture that utilizes soft silicone gaskets that hug around the remaining teeth. This system provides patients a with gentle and effective retention which is comfortable to wear, because it prevents stress to abutment teeth which are normally caused by metal partials. The Elasti-Grip Partial is an ideal choice for patients with a few isolated, mobile, or periodontically involved teeth. The Elasti-Grip Partial is non-metal, which provides superior aesthetics and creates a natural looking smile. These partials also restore the natural gum line of patients who suffer severe periodontal symptoms. Since the Elasti-Grip is acrylic-based, it is easy to add teeth and can even be converted into a full denture.



# Partials



## *DurAcetal*

For partial denture patients, it is hard to match the beauty of a DurAcetal tooth-colored clasp. DurAcetal is a strong, durable, and stain-resistant resin that provides patients with absolute comfort. An advantage of DurAcetal clasps is that they can be added to acrylic, nylon and chrome partials.

## *VisiClear*

VisiClear is the great choice for reliability and aesthetics, as they utilize durable, transparent, and stain-resistant clasps to provide a natural-looking smile. VisiClear partials are a great alternative to unsightly metal clasps. They are extremely comfortable due to their light weight and flexibility. VisiClear clasps can be added to nylon and chrome partials.



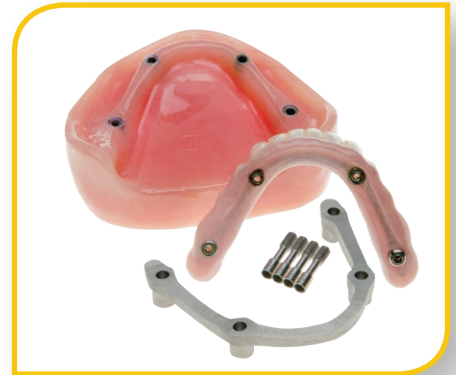
## *Acrylic Temporary Partial with Clear Clasps*

When it comes to temporary acrylic partials we are always constructing the most functional and aesthetic partials available. Why settle for metal wrought wire clasps when you can prescribe a more pleasing clear-clasp design. The clear-clasp design merges in with the abutment teeth and gum tissue to create a natural complete looking smile. No matter how temporary, patients no longer need to suffer with unsightly acrylic partials.

# Implant Dentures

## *Screw-Retained Hybrid Denture*

Screw-Retained Hybrid Dentures utilize a screw retained fixed design function. This restoration combines a CAD/CAM precision milled titanium bar incorporated in acrylic with premium teeth. A Screw Retained Hybrid Denture is an implant supported system commonly used to permanently retain dentures utilizing implants as a type of anchor for retention and stability. Screw Retained Hybrid Dentures are extremely durable and precise fitting.



## *Bar Overdentures*

Our Bar Overdentures are fabricated by using CAD/CAM precision milled titanium bars or cast metal hader bars using attachments. The advantage with Bar Overdentures is that it distributes occlusal loads more evenly across all implants. Bar Overdentures are ideal for patients with a heavy bite or when the implants have been placed in softer bone. Patients have less or no sore spots with implant retained Overdentures.



## *Locator (Stud Retained) Overdentures*

Stud Retained Overdentures utilize freestanding stud type attachments to provide additional retention and stability. Implant Overdentures are ideal for patients seeking a more secure prosthesis that enhance retention, function, and speech. Locator, ERA, and O-Ring ball attachments and the most popular systems.



## *We carry a large selection of Attachments*

### *Extracoronary Attachments*

- ASC 52
- Dalbo Attachments
- ORS-DE

### *Intracoronary Attachments*

- Biloc
- UC
- PD
- Interlock
- Stern G/L

### *Stud Type Attachments*

- Magnets
- ORS (O-Ring System)
- Dalla Bona
- Zest
- Stern ERA Overdenture

### *Bar Type Attachments*

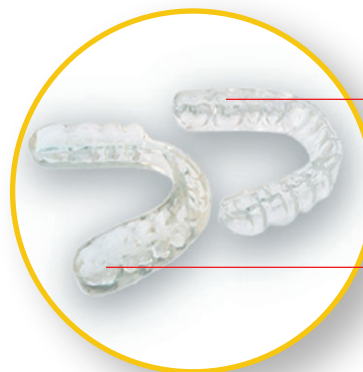
- Dolder Bar System
- Hader Bar System



# Mouthguards

## Talon Nightguard

Talon is best known as the instant-fit nightguard. The soft thermoplastic resin is unlike any other nightguard on the market because of its acceptance to acrylic and its unique transforming features. The Talon resin becomes soft and pliable when placed in hot water before insertion, but at in-mouth temperature, the Talon hardens like a traditional hard nightguard. The Talons soft nature allows the appliance to form securely and comfortably to the patient's mouth, virtually eliminating any need for adjustments. No more wasted time modifying tight spots. After the initial insertion, it is not necessary to insert the Talon in hot water unless a refit is necessary. The result is a durable, retentive, and comfortable nightguard delivered in a fraction of the usual chair-time. The Talon nightguard is a perfect solution that any patient will appreciate.



Hard Layer

Soft Layer

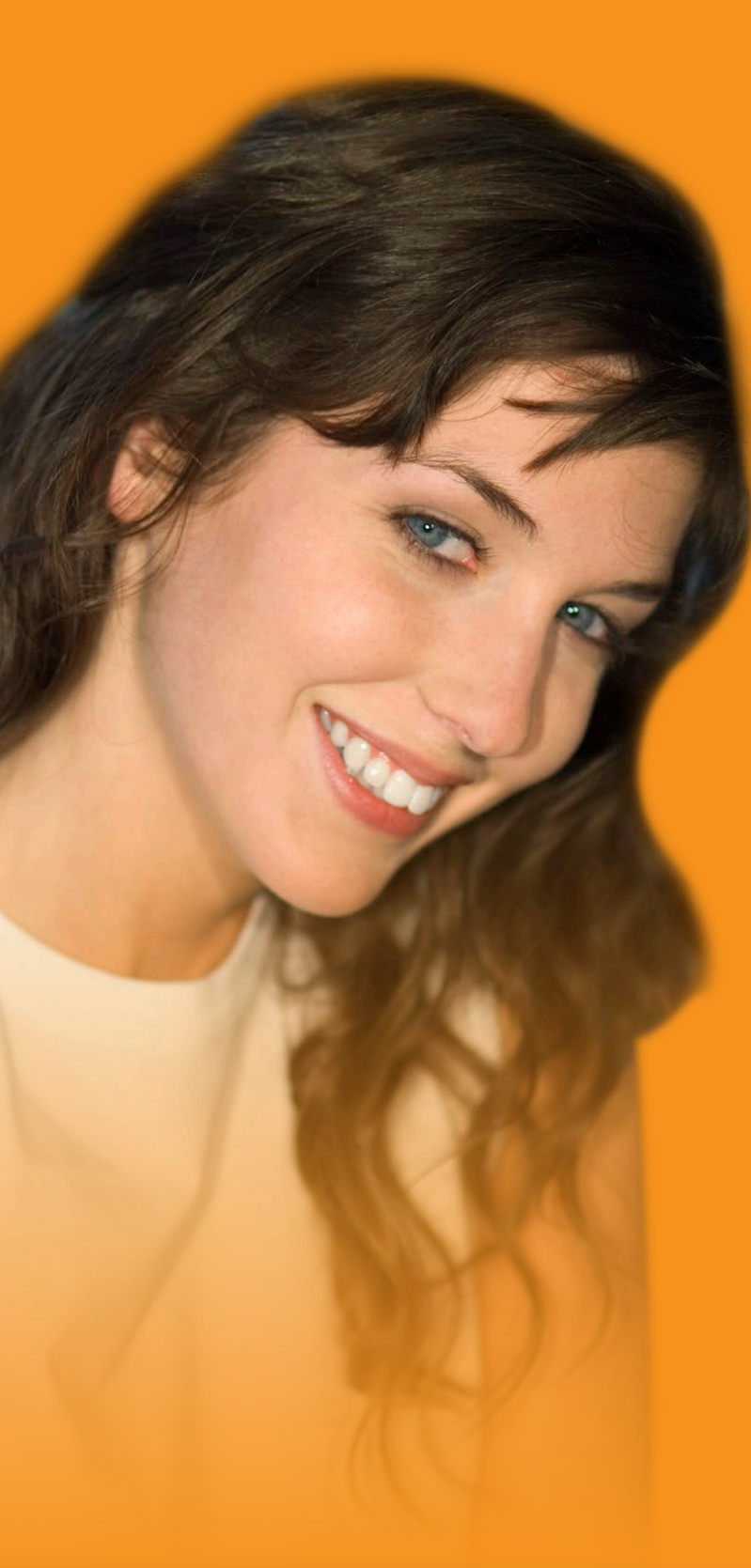
## Hard-Soft Nightguards

You can offer your patients a hard acrylic nightguard with unbelievable comfort and fit. The Hard/ Soft Nightguards have two beneficial ingredients, a hard acrylic outer layer and a soft inner liner for a cozy, snug fit. Certain patients require the strength and coverage of a traditional hard nightguard, but can not bear to wear them. The solution is a Hard/Soft Nightguard...a combination of sturdiness and comfort.



## All-Pro Sportsguard

All-Pro Sport Mouthguards are known for their comfort, protection, and appearance. All-Pro Guards are scientifically designed to help protect athletes by absorbing impact when it happens. All-Pro Guards can also be designed and made to your liking, with your choice of colors, teams, and graphics.



**“We are the  
Removable  
Specialist”**



*Dentures*



*Partials*



*Implants*



*Mouthguards*

 **Cosmetic**  
Dental Laboratory

**Toll Free 800-696-7165**

Local 714-771-0887 • Fax 714-921-8288  
2284 N. Glassell Street #A, Orange CA 92865

[www.OCDENTALLAB.com](http://www.OCDENTALLAB.com)